

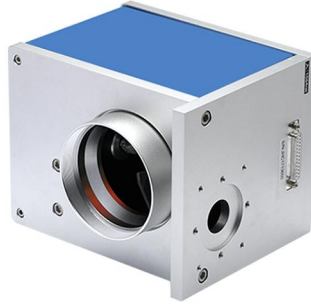


Riselaser

深圳市华升激光科技有限公司

SHENZHEN RISELASER TECHNOLOGY CO., LTD

## 20mm Galvo Scan Head(Laser Part)



### Product description

The input aperture of this galvanometer is 20mm, which is used in optical scanning, laser marking and other industries. This model is designed for high-speed applications.

Advanced servo control algorithm and high positioning accuracy. Through strict material control, advanced manufacturing technology, dust-free factory and long-term aging test to ensure the stable performance of the system.

This galvanometer has the characteristics of zero drift, fast speed, low temperature, compact structure, convenient installation and strong anti-interference ability.

### Technical Parameters

<b>Speed</b>	
Marking speed	800mm/s
Positioning speed	600mm/s
Write speed	53cps
Step response time (1% of full stroke)	1172us
Step response time (10% of full stroke)	1332us
Tracking error	≤520us
<b>Accuracy and error</b>	
Linearity	99.90%
Repeatability	< 8μRad.
Gain error	< 5mRad.
Zero offset (batch origin error)	< 5mRad.
Long time drift (8 hours of continuous work)	< 0.5mRad.
Scale drift	< 40PPM/°C
Zero drift	< 15μRad./°C

E-mail: [carina@riselaser.com](mailto:carina@riselaser.com)

Website: [www.riselaser.com](http://www.riselaser.com)      [www.shdlaser.com](http://www.shdlaser.com)

Address: Building 5, COFCO (Fuan) Robot Intelligent Manufacturing Industrial Park, No. 90 Dayang Road, Fuhai Street, Bao'an District, Shenzhen, China, 518103



## Riselaser

<b>Lens damage threshold</b>	
K9 matrix	9.1J/cm <sup>2</sup>
Si substrate	10J/cm <sup>2</sup>
Lens reflection wavelength	10600nm / 1064nm / 355nm
<b>Power and signal</b>	
Input voltage	±24VDC
Rated current	4A
Interface Protocol	XY2-100
Mechanical scanning angle	±11°
<b>Working current, temperature, size</b>	
Operating temperature	0°C~45°C
storage temperature	-10°C~60°C
Laser input aperture	20mm
Galvanometer size (length × width × height)	186x145x156mm
Galvo weight	≈3.85Kg

## Lens cleaning

### 1. For light pollution (dust, fiber particles) were flexible cleaning.

Using a blowing balloon, Blow off scattered contaminants on the surface of the optical element.



### 2. For light pollution (stains, fingerprints) were flexible cleaning.

Propanol, acetone glue with a cotton swab or alcohol to gently wipe the surface.



### 3. For moderately polluted (saliva, oil) in moderate-intensity cleaning.

Infiltrating distilled white vinegar with a cotton swab, wipe the surface a little pressure.

