



深圳市华升激光科技有限公司

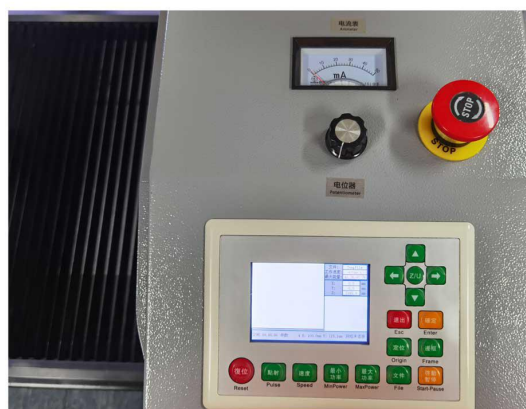
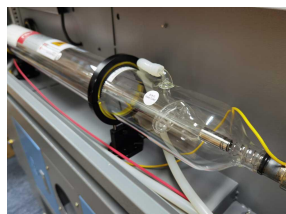
SHENZHEN RISELASER TECHNOLOGY CO., LTD

RL-6040 CO₂ Laser Cutting Machine



Product Description

The CO₂ laser cutting machine is very suitable for cutting non-metallic materials, such as acrylic, wood, and glass. The closed design and high-power exhaust fan ensure a friendly working environment, automatic cutting saves manpower, and precise cutting ensures product quality.



E-mail: sales@riselaser.com

Website: www.riselaser.com www.shdlaser.com

Address: Building 5, COFCO (Fuan) Robot Intelligent Manufacturing Industrial Park, No. 90 Dayang Road, Fuhai Street, Bao'an District, Shenzhen, China, 518103



Riselaser

Main Advantages

1. The high-speed CO2 laser cutting machine uses a new type of high-efficiency laser tube, which has a long service life and the laser beam is more stable than the traditional laser beam.
2. This series of products adopts more scientific design and high-strength steel frame structure, which increases the strength of the fuselage by more than 40% and prevents the deformation of the machine during long-term work.
3. Multi-language selection, 11 common languages are available for operation interface.
4. Advanced DSP control system, professional motion control chip, continuous high-speed curve cutting and shortest path selection function, greatly improving work efficiency.
5. Efficient water cooling, the cooling water can be changed every 3 months, which is convenient.

Parameters

Processing Area	600×400mm
Type	CO2 laser cutting
Laser Power	100W
Laser Tube	Reci
Motor & Driver Type	Leadshine Servo motor & Driver
Engraving Speed	60m/min
X/Y Repeated Positioning Accuracy	3±0.1mm/s
Machine dimensions	1030×800×1400mm
Whole machine weight	260kg

Product Application

Our 6040 laser cutting machine is designed for cutting & engraving a wide range of organic materials including cloth, card, wood, plywood, leather, laminates, plastics, TPE and many others.

Hence, the laser machine has been used in wide applications like

- Architectural Models
- Awards & Trophies
- Packaging Design
- Rubber Stamps
- Signage
- Signs & Displays
- Smartphones & Laptops
- Puzzle Boxes
- Multi-layer Twill Applique

E-mail: sales@riselaser.com

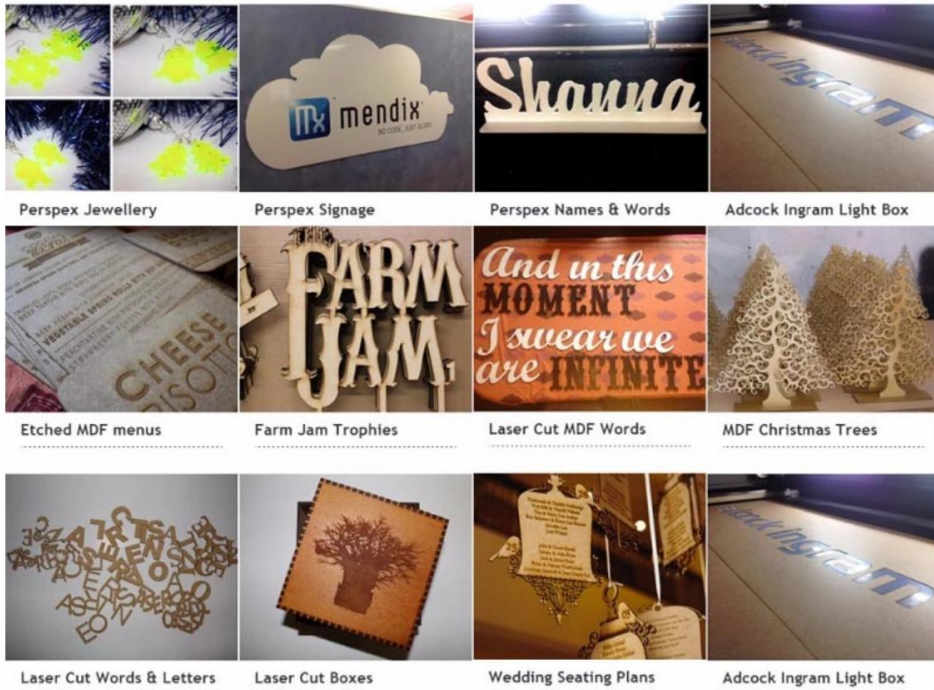
Website: www.riselaser.com www.shdlaser.com

Address: Building 5, COFCO (Fuan) Robot Intelligent Manufacturing Industrial Park, No. 90 Dayang Road, Fuhai Street, Bao'an District, Shenzhen, China, 518103



深圳市华升激光科技有限公司

SHENZHEN RISELASER TECHNOLOGY CO., LTD



Certifications



Packaging

Wooden case along with plastic film



E-mail: sales@riselaser.com

Website: www.riselaser.com www.shdlaser.com

Address: Building 5, COFCO (Fuan) Robot Intelligent Manufacturing Industrial Park, No. 90 Dayang Road, Fuhai Street, Bao'an District, Shenzhen, China, 518103



Riselas

深圳市华升激光科技有限公司

SHENZHEN RISELASER TECHNOLOGY CO., LTD

Cutting machine Pre-sale service :

1.Free sample cutting

For free sample cutting/testing, please send us your CAD file, we will do cutting here and make a video to show you the cutting, or send samples to you to check cutting quality.

2.Customized machine design

According to customer's application, we may revise our machine accordingly for customer's convenience and high production efficiency.

Cutting machine After-sale service:

1.Machine will be supplied with training video and user's manual in English for installation, operation, maintenance and trouble-shooting, and shall give technical guide by e-mail, fax, telephone, skype, whatsapp, etc for fast solution. We can arrange for technician to go to customer's site for overseas service, and the customer should cover visa, ticket and local living cost.

2. Customer may come to our factory for training. We will offer training of installation, operation, machine trouble-shooting, and maintenance. We provide free training and accommodation for up to two people.

E-mail: sales@riselas.com

Website: www.riselas.com www.shdlaser.com

Address: Building 5, COFCO (Fuan) Robot Intelligent Manufacturing Industrial Park, No. 90 Dayang Road, Fuhai Street, Bao'an District, Shenzhen, China, 518103