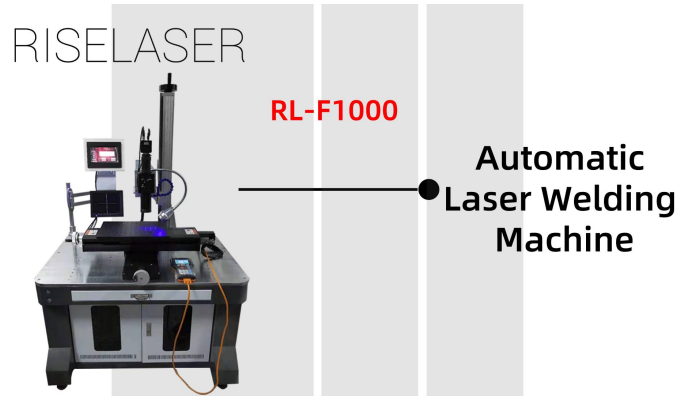




RL-F Series Fiber Laser Continuous Welding Machine Metal



Product Description

Fiber laser has the characteristics of high beam quality and high energy. Compared with the same power YAG laser, it has the characteristics of deep welding depth and good welding strength in continuous welding. It can be suitable for most laser welding fields at present.

Main Advantages

1. Continuous welding, thin weld seam, large depth, small taper and high precision;
2. Excellent beam quality, welding appearance is smooth, flat and beautiful
3. No adjustment, no maintenance, high stability;
4. High electro-optical efficiency: The comprehensive electro-optical efficiency is as high as 20% or more, which greatly saves power consumption during work and saves operating costs;
5. High power and working efficiency.

Parameters

Device Model	RL-F1000	RL-F1500	RL-F2000
Laser wavelength	1080(±10)nm		
Laser power	1000W	1500W	2000W
Adjustable spot size	0.1-2mm		
Pulse Width	1-10ms		
Repeat frequency	1000.0~5000.0Hz		
Laser mode	Single-mode/Multi-mode (optional)		
Operating mode	Continuous		
Gross power consumption	3.5KW	5KW	6.5KW
Cooling method	Water cooling		
Aiming and positioning	CCD monitoring system		

E-mail: carina@riselaser.com

Website: www.riselaser.com www.shdlaser.com

Address: Building 5, COFCO (Fuan) Robot Intelligent Manufacturing Industrial Park, No. 90 Dayang Road, Fuhai Street, Bao'an District, Shenzhen, China, 518103



Riselaser

深圳市华升激光科技有限公司

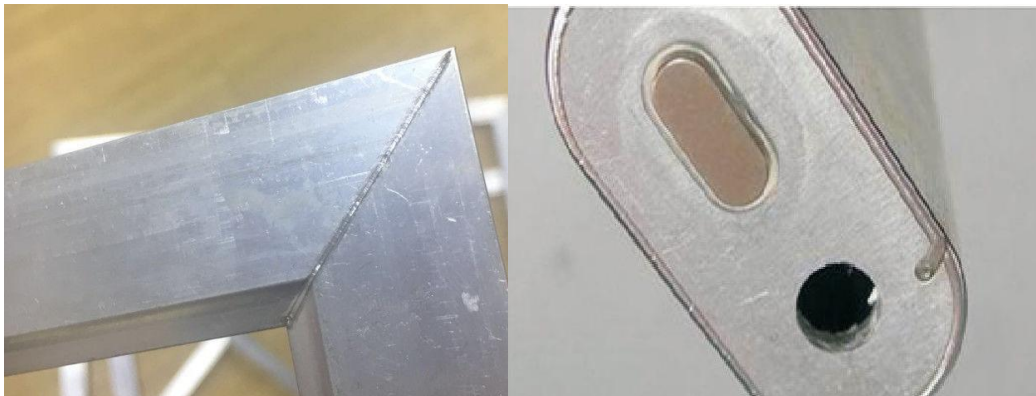
SHENZHEN RISELASER TECHNOLOGY CO., LTD

Control mode	AD		
Mechanical module	3-axis linkage (optional)		
Maximum size of workpiece	200x200/300x300 mm (optional)		
System language	Chinese/English		
Power supply	AC220V ± 5%, 50Hz/ 60Hz	AC220V ± 5%, 50Hz/ 60Hz	AC380V ± 5%, 50Hz/ 60Hz
Working environment	Temperature 10-35°C / Humidity < 90%		
Net weight	300kg		
Gross weight	380kg		
Equipment size	1080x1000x650 mm		

Product Application

Suitable for welding optical communication devices, smart watch metal connectors, manual accessories (medium plates, nuts), batteries, optical fiber coupling devices, picture tube electron guns, connectors, microelectronic components, medical equipment, precision parts, etc. Continuous welding, cutting and drilling of various metal plates (copper, aluminum, titanium, stainless steel, low carbon steel, etc).

It can also continuously scribe, cut and perforate non-metals such as ceramics and silicon wafers.



Certifications



E-mail: carina@riselaser.com

Website: www.riselaser.com www.shdlaser.com

Address: Building 5, COFCO (Fuan) Robot Intelligent Manufacturing Industrial Park, No. 90 Dayang Road, Fuhai Street, Bao'an District, Shenzhen, China, 518103



Riselaser

Packaging

Wooden case along with plastic film

深圳市华升激光科技有限公司
SHENZHEN RISELASER TECHNOLOGY CO., LTD



After-sales Service

1. We will supply instant online service to foreign customers. According to foreign customer's requirement, we are able to arrange for technicians to go aboard to install or maintain the machine.
2. We offer free replacement within one year warranty if any damage under normal using condition.
3. We will offer software upgrade for free for life.
4. After the expiry of warranty, we can renew the warranty contract, which ensures the same service.
5. We will regularly evaluate the staff's service attitude to improve service quality.

E-mail: carina@riselaser.com

Website: www.riselaser.com www.shdlaser.com

Address: Building 5, COFCO (Fuan) Robot Intelligent Manufacturing Industrial Park, No. 90 Dayang Road, Fuhai Street, Bao'an District, Shenzhen, China, 518103